


# Internet Gaming Disorder and Sleep Quality among Jordanian University Students: A Cross-sectional Study



Mahmoud Abdallat<sup>1, #</sup>, Mohammad Al-Sanouri<sup>2, \*, #</sup> , Suhayb Al-Salaymeh<sup>2</sup>, Mohammad Zoubi<sup>2</sup>, Tamer Barakat<sup>2</sup>, Ahmad Badwan<sup>2</sup>, Abdallah Alzubi<sup>2</sup> and Rand Murshidi<sup>3</sup>

<sup>1</sup>Department of Neurosurgery, The University of Jordan, Amman, Jordan

<sup>2</sup>School of Medicine, The University of Jordan, Amman, Jordan

<sup>3</sup>Department of Dermatology, School of Medicine, The University of Jordan, Amman, Jordan

## Abstract:

**Background:** Internet gaming disorder is defined as “Persistent and recurrent use of the internet to engage in games, often with other players, leading to clinically significant impairment or distress.” It is a new evolving disorder that affects many life aspects; therefore, it needs further investigation among different population groups. IGD was introduced for the first time in 2013 in the fifth edition of the *Diagnostic and Statistical Manual of Mental Disorders*, and it suggested carrying out further research among different populations. In 2018, Gaming Disorder (GD) has officially become a type of addiction as the World Health Organization released the 11th revision of the International Classification of Diseases (ICD-11).

**Aims:** The objective of this study is to investigate the prevalence of internet gaming disorder (IGD) and its association with sleep quality and academic performance among Jordanian university students aged 18-26. Our literature review revealed a lack of research on this topic concerning this specific population and culture. Therefore, our study aims to contribute to the existing literature and to provide insights that can inform prevention, assessment, and treatment strategies for those affected.

**Methods:** A cross-sectional study design was used by employing convenience and snowball sampling; a total of 2473 participants completed an electronic self-administered questionnaire that included the Internet Gaming Disorder Scale-SF (IGDS9-SF) and Pittsburgh Sleep Quality Index (PSQI). Of these, 432 were excluded based on our criteria. Our inclusion criteria required participants to be Jordanian university students between the ages of 18 and 26, enrolled as undergraduates at Jordanian universities, and free of neurological or psychiatric conditions.

**Results:** The prevalence of IGD in this study was 15.2% and was more prevalent among males compared to females ( $p = <0.001$ ). Poor sleep quality was reported by 64.6% of the study population and was more frequently observed in females. Age and academic achievements (GPA) were not associated with having IGD. When binary logistic regression was used, IGD (OR=1.882) positively predicted poor sleep quality.

**Conclusion:** Internet gaming disorder is common among Jordanian university students and is associated with poor sleep quality, and our findings have significant implications for policymakers, educators, and healthcare providers in raising awareness about the IGD and its impact on sleep quality.

**Keywords:** Internet gaming disorder, Sleep quality, University students, Gaming disorder, Pittsburgh Sleep Quality Index, Psychiatric conditions.

© 2024 The Author(s). Published by Bentham Open.

This is an open access article distributed under the terms of the Creative Commons Attribution 4.0 International Public License (CC-BY 4.0), a copy of which is available at: <https://creativecommons.org/licenses/by/4.0/legalcode>. This license permits unrestricted use, distribution, and reproduction in any medium, provided the original author and source are credited.

\*Address correspondence to this author at the School of Medicine, The University of Jordan, Amman, Jordan;

E-mail: [Mohammad.tarek99@gmail.com](mailto:Mohammad.tarek99@gmail.com)

#These authors contributed equally to this work

Cite as: Abdallat M, Al-Sanouri M, Al-Salaymeh S, Zoubi M, Barakat T, Badwan A, Alzubi A, Murshidi R. Internet Gaming Disorder and Sleep Quality among Jordanian University Students: A Cross-sectional Study. Clin Pract Epidemiol Ment Health, 2024; 20: e17450179310269. <http://dx.doi.org/10.2174/0117450179310269240820042452>



Received: May 10, 2024  
Revised: August 01, 2024  
Accepted: August 02, 2024  
Published: August 28, 2024



Send Orders for Reprints to  
[reprints@benthamscience.net](mailto:reprints@benthamscience.net)

## 1. INTRODUCTION

Video gaming is an emerging form of entertainment that is easily accessible and available to almost everyone nowadays. According to The American Psychiatric Association (APA), around 160 million American adults play internet-based games, and 97% of American children and adolescents play video games for at least 1 hour [1]. This popularity and extensive usage of video games raise concerns about their negative and positive effects on society and individuals' physical and mental health. Interestingly, specific terms and disorders have been linked to video games, such as Internet Gaming Disorder, excessive video gaming, and even video game addiction, which is similar to other behavioral addictions, such as substance abuse [2].

This research paper revolves around Internet Gaming Disorder (IGD), which is defined as "Persistent and recurrent use of the internet to engage in games, often with other players, leading to clinically significant impairment or distress." Despite the debate and criticism among researchers on whether to include it or not [3, 4], IGD was first introduced in 2013 in the fifth edition of the *Diagnostic and Statistical Manual of Mental Disorders*, which suggested carrying out further investigation among different populations [5]. In 2018, Gaming Disorder (GD) officially became a type of addiction as the World Health Organization released the 11th revision of the International Classification of Diseases (ICD-11) [6].

Previous researchers have reported significant variations in the prevalence rates of IGD across many countries. According to a meta-analysis of 27 studies from 2007 to 2016, the overall prevalence of IGD ranges between 0.7% and 15.6% [7]. Another meta-analysis of 16 studies on the adolescent population showed a prevalence of 4.6% [8]. However, IGD prevalence is highly variable among different populations, countries, and assessment tools. It reached 38.2% in a sample of 555 Brazilian secondary school students and undergraduates [9]. Another study involving 6000 young adults aged 18-25 years in the United States revealed a prevalence of 24.33% [10]. A different representative study in seven European countries involving 12,938 adolescents aged 14-17 years showed that only 1.6% of the participants have IGD [11]. In Germany, the prevalence of IGD is 1.16% among 11,003 participants aged 13-18 years [12], while in Lebanon, it was 9.2% among 524 participants aged 15-19 years [13].

Video games have been linked to positive social, motivational, cognitive, and emotional effects [1], and improving visual short-term memory [14]. Adolescents with IGD also displayed increased brain activity in the parietal lobe and left orbitofrontal cortex [15]. Despite these benefits, many negative impacts have been associated with IGD including insomnia, depression, anxiety, psychoticism, lower family and extra-family relationships, decreased cognitive control, and increased prefrontal cortex inhibition. Additionally, changes in gray matter volume in different areas of the brain may impair

craving and self-control, while alterations in brain networks can contribute to the development and maintenance of IGD and impulse control issues [16-23]. The severity of IGD has also been associated with greater psychological distress and poorer sleep quality [24]. Students with IGD had a higher incidence of suicidal thoughts and self-harm and a higher likelihood of smoking [25-27]. Interestingly, one study showed that adolescents with IGD can affect their sibling's psychological health and sleep [28].

Many countries have reported a high prevalence of sleep disturbances in our youth, raising international concerns about adolescent sleep health [29]. Poor sleep quality has significant adverse effects on well-being and overall quality of life, including one's ability to function throughout the day, health problems, perception of pain, the general perception of one's health and vitality, social functioning, and mental health [30]. Several studies have linked IGD with sleep problems. One study showed that 28.2% of internet gamers had sleep problems in Singapore [31]. A meta-analysis of 33 studies among 26 countries and more than 50,000 participants found that problematic gaming is significantly associated with shorter sleep duration, poorer sleep quality, daytime sleepiness, and sleep problems [32].

The objective of this study is to investigate the prevalence of internet gaming disorder (IGD) and its association with sleep quality and academic performance among Jordanian university students aged 18-26. Our literature review reveals a lack of research on this topic in Jordan concerning this specific population and culture. Therefore, our study aims to contribute to the existing literature and to raise awareness about the impact of IGD on two main aspects of university students' lives: their sleep quality and academic performance.

## 2. METHODS

### 2.1. Study Design

A cross-sectional study was conducted to investigate the relationship between sleep quality and Internet Gaming Disorder among Jordanian university students. An electronic self-administered questionnaire using Google Forms was utilized in the study.

Furthermore, using convenience and snowball sampling, 2437 participants completed the questionnaire. Four hundred thirty-two participants were excluded from our study, as our inclusion criteria required Jordanian university students to be between the ages of 18 and 26, enrolled as undergraduates at Jordanian universities, and free of neurological or psychiatric conditions.

The sample size calculation was conducted via an online calculator called Raosoft, with a margin of error of 5% and a confidence level of 95%, and the minimum recommended sample size was 384. Since this study is expected to be generalized to Jordanian university students aged (18-26), we drew our sample from Jordanian universities, with a student population estimated to be around 332,413 [33].

## 2.2. Instrument and Measurement

Our questionnaire included a demographic and background information part and the Arabic versions of the Internet Gaming Disorder Scale-SF (IGDS9-SF) as well as, Pittsburgh Sleep Quality Index (PSQI). The demographics and background information part included questions related to age, gender, education level, academic performance (GPA), time spent on internet gaming per day in the past month, the purpose of their Internet use, and time spent on social media per day in the past month. Moreover, to minimize the effects of other extraneous factors that may affect the sleep quality in this group, participants with a self-reported diagnosis of psychiatric problems or neurological disease were excluded from the study.

### 2.2.1. The Pittsburgh Sleep Quality Index (PSQI)

The sleep quality was assessed using the Pittsburgh Sleep Quality Index (PSQI). PSQI consists of 19 self-rated questions and five questions rated by the bed partner or roommate. The latter five questions are used for clinical information only, are not tabulated in the scoring of the PSQI, and are not reported on in this article. The 19 self-rated questions assess a wide variety of factors relating to sleep quality, including estimates of sleep duration and latency and of the frequency and severity of specific sleep-related problems. These 19 items are grouped into seven component scores, each weighted equally on a 0-3 scale. The seven component scores are then summed to yield a global PSQI score, which has a range of 0-21, with higher scores indicating worse sleep quality [34]. The PSQI has a high test-retest reliability and good validity for patients with primary insomnia, and it was tested on 80 patients with primary insomnia and 45 healthy control group; a global score > 5 resulted in a sensitivity of 98.7 and specificity of 84.4 as a marker for sleep disturbances in insomnia patients *versus* controls, and the test-retest reliability was 87% [35]. The Arabic version of this questionnaire used in our study was translated by 10 Arabic bilingual translators and tested on 35 healthy Arabic bilinguals, and it revealed moderate internal consistency with a Cronbach's alpha of 65% and moderate to high correlations between PSQI components and the overall global score [36].

### 2.2.2. Internet Gaming Disorder Scale- short Form (IGDS9-SF)

The 9-item IGDS9-SF assesses the severity of Internet Gaming Disorder (IGD) and its detrimental effects over a 12-month period [37]. After obtaining permission, the Arabic-translated version of the dichotomous scale was used, and it was tested and validated on 204 Egyptian students and produced an appropriate internal consistency (Cronbach alpha = 0.612). The questionnaire consists of 9 yes-or-no questions; the scale assigns one point for each "yes" answer and zero point for each "No," where a score of (0-2) indicates normal gamers, a score of (3 to 5) indicates a risky gamer, and (6 or more) indicates a disordered gamer [38].

## 2.3. Data Collection\procedure

The link for the questionnaire was shared on Jordanian universities' social media groups, and the participants were asked to share it with other possible eligible participants. The data collection took place in June 2022 for 6 weeks. Participants responded to an online questionnaire that consisted of three parts, with an average duration of 10 minutes to answer all the questions. Participants can enter the survey only after they have provided an online consent form that expresses their willingness to participate. Their responses were confidential. All the questions included in the questionnaire are required to be filled while setting the form to have no missing value. Numerical entry questions did not allow for nonsensical inputs. The collected data was converted into a Microsoft Excel spreadsheet for subsequent analysis by the research team.

## 2.4. Ethical Considerations

The ethical approval was accomplished by filling out the research approval application provided by the institutional review board (IRB) at the University of Jordan (92/2023). In addition, to ensure confidentiality, the questionnaire did not contain any personally identifiable information, such as names, addresses, government-issued identification numbers, or other data that can be easily linked to individuals. Furthermore, all computerized data files were locked in password-protected devices.

## 2.5. Data analysis

All data were entered in Microsoft Excel 2016 and imported to IBM Statistical Package for the Social Sciences 26 (SPSS) for statistical analysis. Descriptive statistics were used to describe the frequencies of sleep quality, IGD, and other socio-economic factors. Continuous data were expressed as mean  $\pm$  standard deviation (SD). Chi-square was used to examine the bivariate correlations between gamer groups and sleep quality and associated factors. The associations between the severities of IGD and sleep quality were further analyzed using logistic regression, which was controlled for potential confounders. Specifically, sleep quality was entered as a dependent variable; IGD status, social media hours per day, and family income were entered as independent variables. Gender was not added for logistic regression analysis due to multicollinearity. A value of  $p < 0.05$  was considered significant for all analysis tests.

## 3. RESULTS

A total of 2437 participants completed the questionnaire. After excluding participants under the age of 18 or above 26, incomplete questionnaires, and participants previously diagnosed with psychiatric or neurological disorders, 2005 participants (82.2%) were included in the study. The study sample had a higher ratio of females (52.5%,  $n=1053$ ) to males. Most participants (62.7%,  $n=1258$ ) were between 18-20 years old, and 68.5% ( $n=1373$ ) were from the middle region of Jordan. The participants attended 30 different universities across

Jordan, with the most common being The University of Jordan (28.9%, n=580) and Jordan University of Science and Technology (13.4%, n=269). About one-third of the study population were students of scientific majors (35.6%, n=713), followed by students of health majors and students of humanities majors (35.5%, n=711 and 29%,

n=581, respectively). The main reasons for internet use were social media (55.9%, n=1120) and studying (28.3%, n=568). The average gaming and social media hours per day were 1.8 and 5.2 hours, respectively. Detailed demographic information is summarized in Table 1.

**Table 1. Demographic data & internet use.**

| Characteristics                             | -      | -    |
|---|--------|------|
| -   | N=2005 | (%)  |
| <b>Age</b>                                  | -      | -    |
| 18-20                                       | 1258   | 62.7 |
| 21-23                                       | 579    | 28.9 |
| >23   | 168    | 8.4  |
| <b>Sex</b>                                  | -      | -    |
| Female                                      | 1053   | 52.5 |
| male  | 952    | 47.5 |
| <b>University</b>                           | -      | -    |
| University of Jordan                        | 580    | 28.9 |
| Jordan University of Science and Technology | 269    | 13.4 |
| Hashemite University                        | 275    | 13.7 |
| Yarmouk University                          | 117    | 5.8  |
| Balqa Applied University                    | 189    | 9.4  |
| Mutah University                            | 106    | 5.3  |
| Al-Bayt University                          | 105    | 5.2  |
| Others                                      | 364    | 18.5 |
| <b>Family income</b>                        | -      | -    |
| <500  | 689    | 34.4 |
| 500-1000                                    | 837    | 41.7 |
| 1000-1500                                   | 255    | 12.7 |
| >1500                                       | 224    | 11.2 |
| <b>Resident</b>                             | -      | -    |
| Countryside                                 | 449    | 22.4 |
| City  | 1556   | 77.6 |
| <b>Region</b>                               | -      | -    |
| North                                       | 513    | 25.6 |
| Middle                                      | 1373   | 68.5 |
| south                                       | 119    | 5.9  |
| <b>Major</b>                                | -      | -    |
| Human sciences                              | 581    | 29   |
| Health majors                               | 711    | 35.5 |
| Scientific majors                           | 713    | 35.6 |
| <b>Main Internet Use</b>                    | -      | -    |
| Social media                                | 1120   | 55.9 |
| Studying                                    | 568    | 28.3 |
| Video Games                                 | 103    | 5.1  |
| Multiple reasons                            | 202    | 10.1 |
| others                                      | 12     | 0.6  |
| <b>Social media (hours/day)</b>             | -      | -    |
| 0-2   | 341    | 17   |
| 3-4   | 609    | 30.4 |
| >4  | 1055   | 52.6 |
| <b>Gaming hours(hours/day)</b>              | -      | -    |
| <1  | 773    | 38.6 |
| 1-3   | 901    | 44.9 |
| >3  | 331    | 16.5 |

**Table 2. IGD status and its association with demographic factors.**

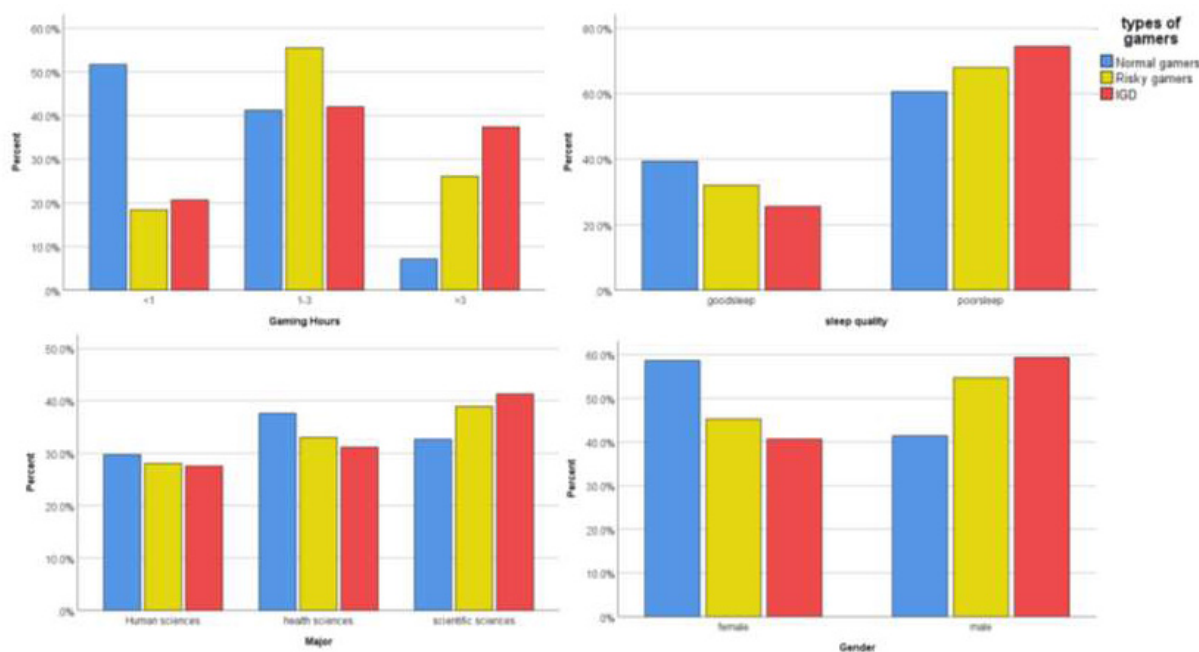
| Characteristics      | IGD Status   | -           | -         | -          | Chi-square | -        |
|----------------------|--------------|-------------|-----------|------------|------------|----------|
| -                    | Normal Gamer | Risky Gamer | IGD       | Total      | p-values   | $\chi^2$ |
| <b>Age</b>           | n(%)         | n(%)        | n(%)      | -          | 0.714      | 2.12     |
| 18-20                | 742(59)      | 329(26.2)   | 187(14.9) | 1258(62.7) | -          | -        |
| 21-23                | 350(29.3)    | 140(27.7)   | 89(29.2)  | 579(28.9)  | -          | -        |
| >23                  | 102(60.7)    | 37(22)      | 29(17.3)  | 168(8.4)   | -          | -        |
| <b>Sex</b>           | -            | -           | -         | -          | <0.001     | 45.78    |
| Female               | 700(66.5)    | 229(21.7)   | 124(11.8) | 1053(52.5) | -          | -        |
| male                 | 494(51.9)    | 277(29.1)   | 181(19)   | 952(47.5)  | -          | -        |
| <b>Family income</b> | -            | -           | -         | -          | 0.295      | 7.29     |
| <500                 | 410(59.5)    | 170(24.7)   | 109(15.8) | 689(34.4)  | -          | -        |
| 500-1000             | 514(61.4)    | 196(23.4)   | 127(15.2) | 837(41.7)  | -          | -        |
| 1000-1500            | 149(58.4)    | 69(27.1)    | 37(14.5)  | 255(12.7)  | -          | -        |
| >1500                | 121(54)      | 71(31.7)    | 32(14.3)  | 224(11.2)  | -          | -        |
| <b>Grade</b>         | -            | -           | -         | -          | 0.182      | 13.82    |
| First semester       | 299(61.4)    | 119(24.4)   | 69(14.2)  | 487(24.3)  | -          | -        |
| Weak                 | 3(37.5)      | 4(50)       | 1(12.5)   | 8(0.4)     | -          | -        |
| Acceptable           | 19(47.5)     | 16(40)      | 5(12.5)   | 40(2)      | -          | -        |
| Good                 | 142(55.5)    | 73(28.5)    | 41(16)    | 256(12.8)  | -          | -        |
| Very good            | 428(58.2)    | 185(25.2)   | 122(16.6) | 735(36.7)  | -          | -        |
| excellent            | 303(63.3)    | 109(22.8)   | 67(14)    | 479(23.9)  | -          | -        |
| <b>Resident</b>      | -            | -           | -         | -          | 0.176      | 3.48     |
| Countryside          | 254(56.6)    | 115(25.6)   | 80(17.8)  | 449(22.4)  | -          | -        |
| City                 | 940(60.4)    | 391(25.1)   | 225(14.5) | 1556(77.6) | -          | -        |
| <b>Region</b>        | -            | -           | -         | -          | 0.214      | 5.81     |
| North                | 307(59.8)    | 118(23)     | 88(17.2)  | 513(25.6)  | -          | -        |
| Middle               | 813(59.2)    | 364(26.5)   | 196(14.3) | 1373(68.5) | -          | -        |
| south                | 74(62.2)     | 24(20.2)    | 21(17.6)  | 119(5.9)   | -          | -        |
| <b>Major</b>         | -            | -           | -         | -          | 0.018      | 11.88    |
| Human sciences       | 355(61.1)    | 142(24.4)   | 84(14.5)  | 581(29)    | -          | -        |
| Health majors        | 449(63.2)    | 167(23.5)   | 95(13.4)  | 711(35.5)  | -          | -        |
| Scientific majors    | 390(54.7)    | 197(27.6)   | 126(17.7) | 713(35.6)  | -          | -        |
| <b>Social media</b>  | -            | -           | -         | -          | .636       | 2.55     |
| 0-2                  | 210(61.6)    | 83(24.3)    | 48(14.1)  | 341(17)    | -          | -        |
| 3-4                  | 373(61.2)    | 147(24.1)   | 89(14.6)  | 609(30.4)  | -          | -        |
| >4                   | 611(57.9)    | 276(26.2)   | 168(15.9) | 1055(52.6) | -          | -        |
| <b>Gaming hours</b>  | -            | -           | -         | -          | <0.001     | 321.37   |
| <1                   | 617(79.8)    | 93(12)      | 63(8.2)   | 773(38.6)  | -          | -        |
| 1-3                  | 492(54.6)    | 281(31.2)   | 128(14.2) | 901(44.9)  | -          | -        |
| >3                   | 85(25.7)     | 132(39.9)   | 114(34.4) | 331(16.5)  | -          | -        |

The participants' average IGD score was 2.48 out of 9, with 15.2% (n=305) of the participants having IGD and 25.2% (n=506) of them being risky players. Among The University of Jordan students, the prevalence of IGD and risky gamers were 15% (n=87) and 24.5% (n=142), respectively. IGD and being a risky gamer were more prevalent among males compared to females (p= <0.001), and they were more prevalent among students of scientific majors and humanities majors compared to health majors (p=0.018). Age, region, GPA, family income, living in the countryside, and hours spent on social media were not significantly associated with either IGD status. Detailed information regarding IGD status and its association with demographic factors is shown in Table 2 and Fig. (1).

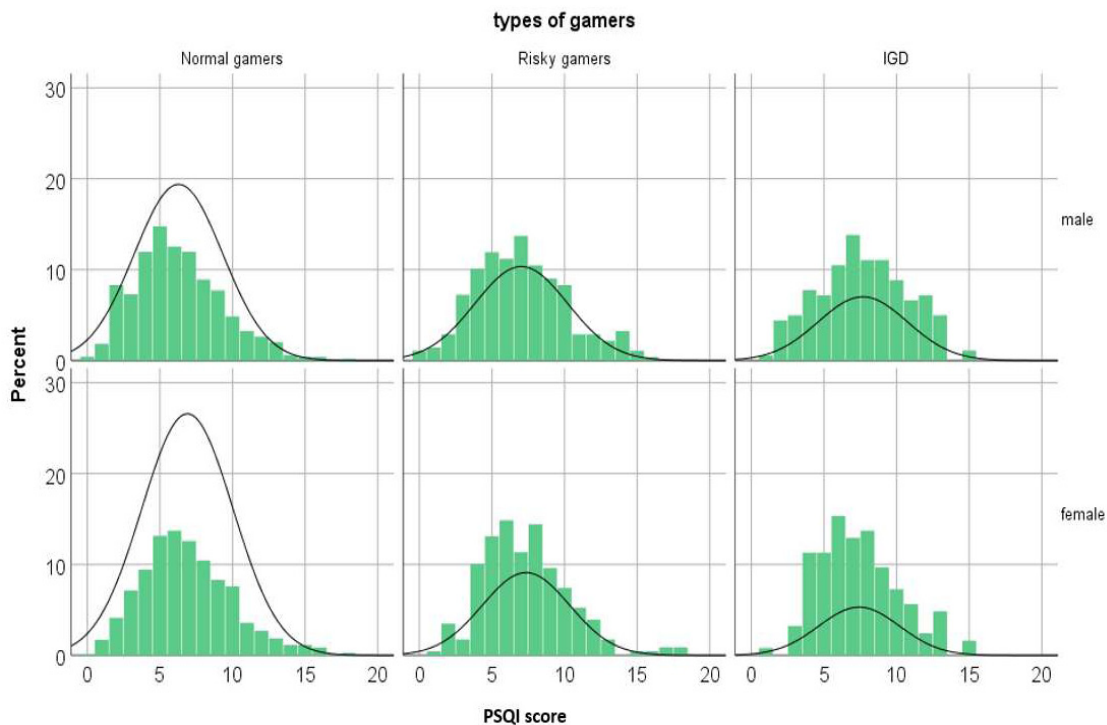
The average PSQI score for our sample is 6.91 out of 24, with 35.4% (n=710) of participants reporting good sleep quality and 64.6% (n=1295) of them reporting poor sleep quality. Among The University of Jordan students, 61.4% (n=356) had poor sleep quality, and 38.6% (n=224) had good sleep quality. A closer examination of sleep components revealed a significant correlation between IGD status and subjective sleep quality, sleep disturbance, use of sleep medication, and daytime dysfunction (p<0.05). More details are shown in Table 3. Poor sleep quality was significantly more common in females, lower family income groups, participants with IGD, and risky gamers (p<0.05). Fig. (2) illustrates PSQI scores distributed by gender and IGD status. Hours spent on social media per day were also significantly associated

with sleep quality ( $p < 0.05$ ). Binary logistic regression analysis indicated that being a risky gamer and having IGD (OR=1.397, 1.882 respectively), spending more hours on social media (OR=1.38), and having a lower family

income (OR=1.592) were significant predictors of poor sleep quality when adjusted for other variables. Further details are shown in Table 4.



**Fig. (1).** These four bar charts demonstrate the significant associations between gaming group clustering and various demographic and gaming-related variables, with percentages represented on the y-axis.



**Fig. (2).** This histogram represents the distribution of PSQI (Pittsburgh Sleep Quality Index) scores, categorized by gender and gaming group, with percentages on the y-axis. The normal distribution curve shows the approximate frequency of each group.

**Table 3. Analysis of PSQI components and its association with IGD status.**

| Sleep Parameters                | IGD Status, N(%) | -            | -         | -          | $\chi^2$ | p-values |
|---------------------------------|------------------|--------------|-----------|------------|----------|----------|
| -                               | Normal Gamers    | Risky Gamers | IGD       | Total      | -        | -        |
| <b>Subjective sleep quality</b> | -                | -            | -         | -          | 36.819   | <0.001   |
| Very good                       | 249(69.6)        | 78(21.8)     | 31(8.7)   | 358(17.9)  | -        | -        |
| Fairly good                     | 602(60)          | 252(25.1)    | 150(14.9) | 1004(50.1) | -        | -        |
| Fairly bad                      | 277(56.1)        | 127(25.7)    | 90(18.2)  | 494(24.6)  | -        | -        |
| Very bad                        | 66(44.3)         | 49(32.9)     | 34(2.8)   | 149(7.4)   | -        | -        |
| <b>Sleep latency(minutes)</b>   | -                | -            | -         | -          | 10.334   | 0.111    |
| 0(better)                       | 301(64.5)        | 107(22.9)    | 59(12.6)  | 467(23.3)  | -        | -        |
| 1                               | 406(58.8)        | 183(26.5)    | 101(14.6) | 690(34.4)  | -        | -        |
| 2                               | 290(56.3)        | 140(27.2)    | 85(16.5)  | 515(25.7)  | -        | -        |
| 3(worse)                        | 197(59.2)        | 76(22.8)     | 60(18)    | 333(16.6)  | -        | -        |
| <b>Sleep duration</b>           | -                | -            | -         | -          | 10.809   | 0.094    |
| >7 h                            | 556(58.9)        | 237(25.1)    | 151(16)   | 944(47.1)  | -        | -        |
| 6-7 h                           | 440(57.8)        | 200(26.3)    | 121(15.9) | 761(38)    | -        | -        |
| 5-6 h                           | 127(63.2)        | 47(23.4)     | 27(13.4)  | 201(10)    | -        | -        |
| <5 h                            | 71(71.7)         | 22(22.2)     | 6(6.1)    | 99(4.9)    | -        | -        |
| <b>Sleep efficiency</b>         | -                | -            | -         | -          | 4.219    | 0.647    |
| >85%                            | 734(59.7)        | 314(25.5)    | 181(14.7) | 1229(61.3) | -        | -        |
| 75-84%                          | 2.7(62.2)        | 76(22.8)     | 50(15)    | 333(16.6)  | -        | -        |
| 65-74%                          | 140(59.8)        | 58(27.8)     | 36(15.4)  | 234(11.7)  | -        | -        |
| <65%                            | 113(54.1)        | 58(27.8)     | 38(18.2)  | 209(10.4)  | -        | -        |
| <b>Sleep disturbance</b>        | -                | -            | -         | -          | 29.268   | <0.001   |
| 0(better)                       | 64(66)           | 19(19.6)     | 14(14.4)  | 97(4.8)    | -        | -        |
| 1                               | 693(63.5)        | 267(24.5)    | 132(12.1) | 1092(54.5) | -        | -        |
| 2                               | 390(53.6)        | 199(27.4)    | 138(19)   | 727(36.3)  | -        | -        |
| 3(worse)                        | 47(52.8)         | 21(23.6)     | 21(23.6)  | 89(4.4)    | -        | -        |
| <b>Use of sleep medication</b>  | -                | -            | -         | -          | 9.478    | 0.009    |
| Not during the past month       | 1068(60.8)       | 430(24.5)    | 258(14.7) | 1756(87.6) | -        | -        |
| Less than once a month          | 126(50.6)        | 76(30.5)     | 47(18.9)  | 249(12.4)  | -        | -        |
| <b>Daytime dysfunction</b>      | -                | -            | -         | -          | 49.918   | <0.001   |
| 0(better)                       | 148(70.1)        | 44(20.9)     | 19(9)     | 211(10.5)  | -        | -        |
| 1                               | 644(63.8)        | 228(22.6)    | 137(13.6) | 1009(50.3) | -        | -        |
| 2                               | 326(53.6)        | 177(29.1)    | 105(17.3) | 608(30.3)  | -        | -        |
| 3(worse)                        | 76(42.9)         | 57(32.2)     | 44(24.9)  | 177(8.8)   | -        | -        |

**Table 4. Association of study variables with sleep quality.**

| Characteristics | Sleep Quality      |                    |            | Chi-square | -        | - | - | - |
|-----------------|--------------------|--------------------|------------|------------|----------|---|---|---|
|                 | Good Sleep Quality | Poor Sleep Quality | Total      | p-values   | $\chi^2$ | - | - | - |
| <b>Age</b>      | F(%)               | F(%)               | F(%)       | 0.448      | 1.61     | - | - | - |
| 18-20           | 441(35.1)          | 817(64.9)          | 1258(62.7) | -          | -        | - | - | - |
| 21-23           | 215(37.1)          | 364(62.9)          | 579(28.9)  | -          | -        | - | - | - |
| >23             | 54(32.1)           | 114(67.9)          | 168(8.4)   | -          | -        | - | - | - |
| <b>Sex</b>      | -                  | -                  | -          | 0.026      | 4.99     | - | - | - |
| Female          | 349(33.1)          | 704(66.9)          | 1053(52.5) | -          | -        | - | - | - |
| male            | 361(37.9)          | 591(62.1)          | 952(47.5)  | -          | -        | - | - | - |
| <b>Grade</b>    | -                  | -                  | -          | 0.28       | 6.28     | - | - | - |
| First semester  | 161(33.1)          | 326(66.9)          | 487(24.3)  | -          | -        | - | - | - |
| Weak            | 0(0)               | 8(100)             | 8(0.4)     | -          | -        | - | - | - |
| Acceptable      | 14(35)             | 26(65)             | 40(2)      | -          | -        | - | - | - |
| Good            | 93(36.3)           | 163(63.7)          | 256(12.8)  | -          | -        | - | - | - |
| Very good       | 270(36.7)          | 465(63.3)          | 735(36.7)  | -          | -        | - | - | - |

(Table 6) contd....

| Characteristics                | Sleep Quality      |                    |            | Chi-square | -              | -                          | -     | -             |
|--------------------------------|--------------------|--------------------|------------|------------|----------------|----------------------------|-------|---------------|
|                                | Good Sleep Quality | Poor Sleep Quality | Total      | p-values   | χ <sup>2</sup> | -                          | -     | -             |
| excellent                      | 172(35.9)          | 307(64.1)          | 479(23.9)  | -          | -              | -                          | -     | -             |
| <b>Resident</b>                | -                  | -                  | -          | 0.314      | 1.02           | -                          | -     | -             |
| Countryside                    | 150(33.4)          | 299(66.6)          | 449(22.4)  | -          | -              | -                          | -     | -             |
| City                           | 560(36)            | 996(64)            | 1556(77.6) | -          | -              | -                          | -     | -             |
| <b>Region</b>                  | -                  | -                  | -          | 0.189      | 3.33           | -                          | -     | -             |
| North                          | 166(32.4)          | 347(67.6)          | 513(25.6)  | -          | -              | -                          | -     | -             |
| Middle                         | 497(36.2)          | 876(63.8)          | 1373(68.5) | -          | -              | -                          | -     | -             |
| south                          | 47(39.5)           | 72(60.5)           | 119(5.9)   | -          | -              | -                          | -     | -             |
| <b>Major</b>                   | -                  | -                  | -          | 0.106      | 4.48           | -                          | -     | -             |
| Human sciences                 | 187(32.2)          | 394(67.8)          | 581(29)    | -          | -              | -                          | -     | -             |
| Health majors                  | 269(37.8)          | 442(62.2)          | 711(35.5)  | -          | -              | -                          | -     | -             |
| Scientific majors              | 254(35.6)          | 459(64.4)          | 713(35.6)  | -          | -              | -                          | -     | -             |
| Gaming hours                   | -                  | -                  | -          | 0.854      | 0.315          | -                          | -     | -             |
| <1                             | 270(34.9)          | 503(65.1)          | 773(38.6)  | -          | -              | -                          | -     | -             |
| 1-3                            | 325(36.1)          | 576(63.9)          | 901(44.9)  | -          | -              | -                          | -     | -             |
| >3                             | 115(34.7)          | 216(65.3)          | 331(16.5)  | -          | -              | -                          | -     | -             |
| -                              | -                  | -                  | -          | -          | -              | <b>Logistic Regression</b> |       |               |
| -                              | -                  | -                  | -          | -          | -              | P                          | OR    | CI 95%(UL-LL) |
| <b>Family income</b>           | -                  | -                  | -          | 0.016      | 10.31          | 0.023                      | -     | -             |
| <500                           | 227(32.9)          | 462(67.1)          | 689(34.4)  | -          | -              | 0.003                      | 1.592 | 1.166-2.174   |
| 500-1000                       | 288(34.4)          | 549(65.6)          | 837(41.7)  | -          | -              | 0.008                      | 1.507 | 1.113-2.042   |
| 1000-1500                      | 96(37.6)           | 159(62.4)          | 255(12.7)  | -          | -              | 0.152                      | 1.309 | 0.905-1.894   |
| >1500 <sup>(ref)</sup>         | 99(44.2)           | 125(55.8)          | 224(11.2)  | -          | -              | -                          | -     | -             |
| <b>Social media(h)</b>         | -                  | -                  | -          | 0.004      | 10.93          | 0.014                      | -     | -             |
| 0-2 <sup>(ref)</sup>           | 138(40.5)          | 203(59.5)          | 341(17)    | -          | -              | -                          | -     | -             |
| 3-4                            | 233(38.3)          | 376(61.7)          | 609(30.4)  | -          | -              | 0.515                      | 1.095 | 0.833-1.441   |
| >4                             | 339(32.1)          | 716(67.9)          | 1055(52.6) | -          | -              | 0.012                      | 1.386 | 1.075-1.788   |
| <b>IGD status</b>              | -                  | -                  | -          | <0.001     | 23.61          | <0.001                     | -     | -             |
| Normal gamers <sup>(ref)</sup> | 470(39.4)          | 724(60.6)          | 1194(59.6) | -          | -              | -                          | -     | -             |
| Risky gamers                   | 162(32)            | 344(68)            | 506(25.2)  | -          | -              | 0.003                      | 1.397 | 1.119-1.744   |
| IGD                            | 78(25.6)           | 227(74.4)          | 305(15.2)  | -          | -              | <0.001                     | 1.882 | 1.417-2.499   |

#### 4. DISCUSSION

To the best of our knowledge, this is the first study to investigate IGD prevalence and its association with gender, academic achievements, and sleep quality among Jordanian university students. We found that 15.2% of Jordanian university students have IGD, a high prevalence compared to 9.2% in Lebanon [13], 6.1% among 423 gamers in 3 Arab countries including Jordan [17], 7.1% in Pakistan [39], 5.3% in the US [25], 1.6% among 7 European countries [11], and 4.6% in a Meta-analysis across 3 decades on adolescents aged 10-19 years [8]. A recent meta-analysis conducted on 19 studies in Asia and 3 in Europe found that the pooled prevalence among all ages was 6.7% [40]. Restricting the analysis to students at the University of Jordan, the largest university in the country, showed a similar pattern (15% with IGD and 24.5% being risky gamers). A recent study in a single university in Egypt which shares a similar socio-cultural environment with Jordan found that 6% of the students aged 18-25 years old had IGD [41], this high prevalence in our study may be due to the recruitment of a young age group (18-26), who are more likely to play video games than the general population, as prior studies found that the prevalence of video game addiction decreased with

age and being younger is associated with IGD [42, 43]. Additionally, our study was conducted after the COVID-19 pandemic and quarantine measures, unlike many of the studies mentioned, which were conducted before the pandemic. A large study in Japan found that IGD prevalence has increased during the COVID-19 pandemic by 1.6 times compared to before the pandemic [44]. On the other hand, Brazil had a higher IGD prevalence of 38.2% [9] and 19.9% in England [45]. This variability in prevalence can be attributed to different assessment tools and thresholds, as well as different age groups and populations. Although two studies in Pakistan and Slovenia used the same tool we used in our study (IGDS9-SF) in a nearly similar age group (16-28 and 12-16 years old respectively), their IGD prevalence was 1.5% and 2.5%, respectively [46, 47].

In our study, the prevalence of being a risky gamer (25.2%) is higher than the IGD prevalence (15.2%). This is consistent with a study in Pakistan, which showed that 25.2% of the sample were risky gamers and 7.1% had IGD [39]. Similarly, a study in the US showed the same pattern, with 9.2% being risky gamers and 5.3% having IGD [25]. Other studies in Egypt and Lebanon also showed higher percentages of risky gamers compared to those



with IGD (50% vs. 13.6% in Egypt and 35.7% vs. 9.2% in Lebanon) [13, 48]. These results can be explained by needing a lower threshold and lower score to be a risky gamer before having IGD.

Despite the higher number of females who participated in our study (52.5%), we found that IGD is significantly associated with the male gender, with 19% of males having IGD compared to 11.8% of females. In contrast, a study at the University of Mansoura in Egypt did not find any significant gender difference in IGD prevalence [41]. Nevertheless, our result aligns with many studies showing higher prevalence in males compared to females. For example, the prevalence of IGD in European adolescent males was 3.1%, and in females was 0.3% [11]. Similar results were demonstrated in a Nationwide German study with a large sample of 44,610 participants [49]. A Canadian study showed that Males were also significantly more likely to have IGD than females (15.1% vs. 3.1%, respectively) [50]. Additionally, studies in Slovenia, Germany and Brazil demonstrated that being male is a risk factor for IGD [9, 51, 52]. Another study in Norway showed that males report more problems with gaming than females [43]. Siste *et al.* [53] from Indonesia found that males were 4 times more likely to have internet gaming disorder than females. This result can be explained by the male preference for certain game genres, which themselves are more time-consuming and demanding [52]. Moreover, functional magnetic resonance imaging studies showcased a higher activity in the mesocorticolimbic pathway in males compared to females when playing video games [54]. Males were also more sensitive to gaming-related rewards and higher cravings than females [55]. In addition, males spent more time playing video games. A national study conducted in the US found that the average playtime for males was 16.4 hours per week, compared to 9.2 hours per week for females [56]. Furthermore, our findings showed that increased gaming hours were associated with IGD. These findings parallel the results of previous studies looking into the link between gaming time and IGD risk [57]. Additionally, socio-cultural factors, such as outdoor gaming centers being mostly frequented by males in our country, may contribute to the higher IGD prevalence among males.

GPA was not associated with IGD in our study, in contrast to 2 large studies in Germany [10, 47] and one across 7 European countries [11], which found that students with IGD had lower grades in school and diminished academic performance. This discrepancy can be explained by the fact that 24.3% of the sample were in their first semester at university, so they did not have GPAs yet, which might have affected our results. Age was also not associated with having IGD, similar to a study among European adolescents aged between (14-17) years [11]. This could be due to the narrow age group range (18-26) used in our study, resulting in participants with a similar lifestyle. Moreover, 2 studies in Norway assessed IGD in wide age groups ((15-40) years and (16-74) years respectively) and found that young age is significantly associated with IGD [42, 43].

64.6% of Jordanian university students reported poor sleep quality, which is similar to 60% of Al-Azhar university students [48] and 65.4% of Ethiopian adults [58]. This high prevalence should raise a national concern as sleep disorders play a central role in the development of Dysregulation of mood, energy, and social rhythms syndrome (DYMERS); a newly emerged concept that carries a substantial influence on health-related quality of life and can be a consequence for many disorders such as panic disorder [59, 60].

In comparison to normal gamers, our results showed that participants with IGD and risky gamers had lower subjective sleep quality, sleep disturbance, daytime dysfunction, and use of sleep medication. Previous studies have established a link between pathological gaming and poor sleep quality. IGD has many effects on different components of sleep, and it was linked to sleeping duration [13], sleep disorders and insomnia [61], and daytime tiredness [62]. Furthermore, IGD was associated with poorer sleep quality, consistent with research conducted in France [63], Pakistan [39], and the US [25]. These results can be explained by the fact that students with IGD were more likely to delay their bedtimes and shorten their total time spent sleeping or even wake up during the night to continue gaming [13, 64]. Playing online games triggers the release of norepinephrine in the cortex and dopamine in the midbrain. These neurotransmitters are part of the reticular activating system (RAS) and are responsible for keeping gamers awake [65]. Additionally, light exposure during gaming can suppress melatonin production, a hormone produced by the pineal gland at night and in darkness [66]. Furthermore, for many gamers, staying up late to play can be a socially rewarding experience [67]. All these negative effects of IGD on sleep quality highlight the need for treatment. Two recent systematic reviews found that non-pharmacotherapy modalities such as behavioral therapy (CBT)/multi-level counseling (MLC) and pharmacotherapy treatments such as bupropion, methylphenidate, and a range of selective serotonin reuptake inhibitors are all effective in treating IGD [68, 69].

There are a few limitations associated with this study that should be addressed. This study, as with any cross-sectional study, has an inherent bias as it measures both the exposure and the outcome simultaneously, making it difficult to determine causality. Accordingly, this study cannot support causal links due to the lack of a time dimension. The survey was conducted *via* an online questionnaire, and convenience and snowball sampling were used to collect data, both of which could have resulted in sampling bias. Since questionnaires were distributed to acquaintances who may share common characteristics and participants were chosen based on availability, there is a risk of self-selection bias. Additionally, participants may not have accurate time perception. Our data collection tool is slightly bulky, including more than 40 questions, and some participants may answer some questions carelessly. Further research should explore the long-term effects of IGD on academic

performance and mental health among university students. Longitudinal studies could provide deeper insights into the causative factors and effectiveness of various intervention strategies in different ethnic and age groups (Supplementary material-IDG).

## CONCLUSION

Internet Gaming Disorder (IGD) is common among Jordanian university students and is significantly associated with poor sleep quality. Our findings emphasize the need for urgent intervention and targeted strategies to mitigate the effects of IGD on this vulnerable population. Policymakers, educators, and healthcare providers must raise awareness about IGD and its impact on sleep quality. Efforts are necessary to identify individuals at risk and to implement early interventions to protect future generations from this emerging global issue and its consequences, which impose a high burden on society.

## AUTHOR CONTRIBUTION

It is hereby acknowledged that all authors have accepted responsibility for the manuscript's content and consented to its submission. They have meticulously reviewed all results and unanimously approved the final version of the manuscript.

## LIST OF ABBREVIATIONS

|        |   |  |
|--------|---|--|
| GD     | = | Gaming Disorder                          |
| ICD-11 | = | International Classification of Diseases |
| IGD    | = | Internet Gaming Disorder                 |
| PSQI   | = | Pittsburgh Sleep Quality Index           |
| APA    | = | American Psychiatric Association         |
| RAS    | = | Reticular Activating System              |
| MLC    | = | Multi-Level Counseling                   |

## ETHICS APPROVAL AND CONSENT TO PARTICIPATE

The ethical approval was accomplished by filling out the research approval application provided by the institutional review board (IRB) at the University of Jordan, Jordan (92/2023).

## HUMAN AND ANIMAL RIGHTS

All procedures performed in studies involving human participants were in accordance with the ethical standards of institutional and/or research committee and with the 1975 Declaration of Helsinki, as revised in 2013.

## CONSENT FOR PUBLICATION

The informed consent was obtained from all participants of this study.

## STANDARDS OF REPORTING

STROBE guidelines were followed.

## AVAILABILITY OF DATA AND MATERIALS

The data supporting the findings of the article is

available in the Zenodo Repository at <https://zenodo.org/records/13382368>, reference number [10.5281/zenodo.13382368].

## FUNDING

None.

## CONFLICT OF INTEREST

The authors declare no conflict of interest financial or otherwise.

## ACKNOWLEDGEMENTS

Declared none.

## SUPPLEMENTARY MATERIAL

Supplementary material is available on the publisher's website along with the published article.

## REFERENCES

- [1] Granic I, Lobel A, Engels RCME. The benefits of playing video games. *Am Psychol* 2014; 69(1): 66-78. <http://dx.doi.org/10.1037/a0034857> PMID: 24295515
- [2] Han DH, Kim YS, Lee YS, Min KJ, Renshaw PF. Changes in cue-induced, prefrontal cortex activity with video-game play. *Cyberpsychol Behav Soc Netw* 2010; 13(6): 655-61. <http://dx.doi.org/10.1089/cyber.2009.0327> PMID: 21142990
- [3] Rumpf HJ, Achab S, Billieux J, et al. Including gaming disorder in the ICD-11: The need to do so from a clinical and public health perspective. *J Behav Addict* 2018; 7(3): 556-61. <http://dx.doi.org/10.1556/2006.7.2018.59> PMID: 30010410
- [4] Aarseth E, Bean AM, Boonen H, et al. Scholars' open debate paper on the World Health Organization ICD-11 Gaming Disorder proposal. *J Behav Addict* 2017; 6(3): 267-70. <http://dx.doi.org/10.1556/2006.5.2016.088> PMID: 28033714
- [5] Psychiatry Online. Diagnostic and Statistical Manual of Mental Disorders. Virginia, United States: American Psychiatric Association 2024. <http://dx.doi.org/10.1176/appi.books.9780890425787>
- [6] World Health Organization. International statistical classification of diseases and related health problems. 2019. Available From: <https://icd.who.int/>
- [7] Feng W, Ramo DE, Chan SR, Bourgeois JA. Internet gaming disorder: Trends in prevalence 1998-2016. *Addict Behav* 2017; 75: 17-24. <http://dx.doi.org/10.1016/j.addbeh.2017.06.010> PMID: 28662436
- [8] Fam JY. Prevalence of internet gaming disorder in adolescents: A meta-analysis across three decades. *Scand J Psychol* 2018; 59(5): 524-31. <http://dx.doi.org/10.1111/sjop.12459> PMID: 30004118
- [9] Severo RB, Soares JM, Affonso JP, Giusti DA, de Souza AA Junior, de Figueiredo VL. Prevalence and risk factors for internet gaming disorder. *Braz J Psychiatry* 2020; 42(5): 532-5. <http://dx.doi.org/10.1590/1516-4446-2019-0760>
- [10] Moreno M, Riddle K, Jenkins MC, Singh AP, Zhao Q, Eickhoff J. Measuring Problematic Internet Use, Internet Gaming Disorder, and Social Media Addiction in Young Adults: Cross-sectional Survey Study. *JMIR Public Health Surveill* 2022; 8(1): e27719. <http://dx.doi.org/10.2196/27719> PMID: 34081596
- [11] Müller KW, Janikian M, Dreier M, et al. Regular gaming behavior and internet gaming disorder in European adolescents: Results from a cross-national representative survey of prevalence, predictors, and psychopathological correlates. *Eur Child Adolesc Psychiatry* 2015; 24(5): 565-74. <http://dx.doi.org/10.1007/s00787-014-0611-2> PMID: 25189795
- [12] Rehbein F, Kliem S, Baier D, Mößle T, Petry NM. Prevalence of internet gaming disorder in German adolescents: Diagnostic

- contribution of the nine DSM-5 criteria in a state-wide representative sample. *Addiction* 2015; 110(5): 842-51. <http://dx.doi.org/10.1111/add.12849> PMID: 25598040
- [13] Hawi NS, Samaha M, Griffiths MD. Internet gaming disorder in Lebanon: Relationships with age, sleep habits, and academic achievement. *J Behav Addict* 2018; 7(1): 70-8. <http://dx.doi.org/10.1556/2006.7.2018.16> PMID: 29486571
- [14] Baniqued PL, Lee H, Voss MW, *et al.* Selling points: What cognitive abilities are tapped by casual video games? *Acta Psychol (Amst)* 2013; 142(1): 74-86. <http://dx.doi.org/10.1016/j.actpsy.2012.11.009> PMID: 23246789
- [15] Kwak KH, Hwang HC, Kim SM, Han DH. Comparison of behavioral changes and brain activity between adolescents with internet gaming disorder and student pro-gamers. *Int J Environ Res Public Health* 2020; 17(2): 441. <http://dx.doi.org/10.3390/ijerph17020441> PMID: 31936471
- [16] Yu Y, Yang X, Wang S, *et al.* Serial multiple mediation of the association between internet gaming disorder and suicidal ideation by insomnia and depression in adolescents in Shanghai, China. *BMC Psychiatry* 2020; 20(1): 460. <http://dx.doi.org/10.1186/s12888-020-02870-z> PMID: 32967648
- [17] Almutairi TA, Almutairi KS, Ragab KM, *et al.* Prevalence of Internet gaming disorder and its association with psychiatric comorbidities among a sample of adults in three Arab countries. *Middle East Curr Psychiat* 2023; 30(1): 8. <http://dx.doi.org/10.1186/s43045-023-00280-x>
- [18] De Pasquale C, Sciacca F, Martinelli V, Chiappedi M, Dinaro C, Hichy Z. Relationship of Internet Gaming Disorder with Psychopathology and Social Adaptation in Italian Young Adults. *Int J Environ Res Public Health* 2020; 17(21): 8201. <http://dx.doi.org/10.3390/ijerph17218201> PMID: 33172015
- [19] Zuo L, Ai K, Liu W, Qiu B, Tang R, Fu J. Navigating Exploitative Traps: Unveiling the Uncontrollable Reward Seeking of Individuals With Internet Gaming Disorder. *Biol Psych: Cognit Neurosci Neuroimag* 2024; 2024: S2451902224001381.
- [20] Tian MY, Zhou XY, Liao XY, *et al.* Brain structural alterations in internet gaming disorder: Focus on the mesocorticolimbic dopaminergic system. *Prog Neuropsychopharmacol Biol Psychiatry* 2023; 127: 110806. <http://dx.doi.org/10.1016/j.pnpbp.2023.110806> PMID: 37271367
- [21] Mestre-Bach G, Granero R, Fernández-Aranda F, Jiménez-Murcia S, Potenza MN. Independent component analysis for internet gaming disorder. *Dialogues Clin Neurosci* 2023; 25(1): 14-23. <http://dx.doi.org/10.1080/19585969.2023.2168135> PMID: 36817972
- [22] Tsai JK, Lu WH, Hsiao RC, Hu HF, Yen CF. Relationship between Difficulty in Emotion Regulation and Internet Addiction in College Students: A One-Year Prospective Study. *Int J Environ Res Public Health* 2020; 17(13): 4766. <http://dx.doi.org/10.3390/ijerph17134766> PMID: 32630720
- [23] Zhu L, Zhu Y, Li S, *et al.* Association of internet gaming disorder with impulsivity: Role of risk preferences. *BMC Psychiatry* 2023; 23(1): 754. <http://dx.doi.org/10.1186/s12888-023-05265-y> PMID: 37845703
- [24] Wong HY, Mo HY, Potenza MN, *et al.* Relationships between Severity of Internet Gaming Disorder, Severity of Problematic Social Media Use, Sleep Quality and Psychological Distress. *Int J Environ Res Public Health* 2020; 17(6): 1879. <http://dx.doi.org/10.3390/ijerph17061879> PMID: 32183188
- [25] Ohayon MM, Roberts L. Internet gaming disorder and comorbidities among campus-dwelling U.S. university students. *Psychiatry Res* 2021; 302: 114043. <http://dx.doi.org/10.1016/j.psychres.2021.114043> PMID: 34129998
- [26] Junus A, Hsu Y, Wong C, Yip PSF. Is internet gaming disorder associated with suicidal behaviors among the younger generation? Multiple logistic regressions on a large-scale purposive sampling survey. *J Psychiatr Res* 2023; 161: 2-9. <http://dx.doi.org/10.1016/j.jpsychires.2023.02.038> PMID: 36889223
- [27] Forsyth SR, Malone RE. Smoking in Video Games: A Systematic Review. *Nicotine Tob Res* 2016; 18(6): 1390-8. <http://dx.doi.org/10.1093/ntr/ntv160> PMID: 26209852
- [28] Lin CY, Potenza MN, Broström A, Pakpour AH. Internet gaming disorder, psychological distress, and insomnia in adolescent students and their siblings: An actor-partner interdependence model approach. *Addict Behav Rep* 2021; 13: 100332. <http://dx.doi.org/10.1016/j.abrep.2020.100332> PMID: 33437860
- [29] Gradisar M, Gardner G, Dohnt H. Recent worldwide sleep patterns and problems during adolescence: A review and meta-analysis of age, region, and sleep. *Sleep Med* 2011; 12(2): 110-8. <http://dx.doi.org/10.1016/j.sleep.2010.11.008> PMID: 21257344
- [30] Hanson JA, Huecker MR. *Sleep Deprivation*. StatPearls. Treasure Island, FL: StatPearls Publishing 2024.
- [31] Satghare P, Abidin E, Vaingankar JA, Chua BY, Pang S, Picco L. Prevalence of sleep problems among those with internet gaming disorder in Singapore. *ASEAN J Psychiatry* 2016; 17(2): 1-11.
- [32] Kristensen JH, Pallesen S, King DL, Hysing M, Erevik EK. Problematic Gaming and Sleep: A Systematic Review and Meta-Analysis. *Front Psychiatry* 2021; 12: 675237. <http://dx.doi.org/10.3389/fpsy.2021.675237> PMID: 34163386
- [33] Ministry of Higher Education and Scientific Research. The Annual Statistical Report on Higher Education in Jordan for the Year 2020-2021. 2021. Available From: [https://mohe.gov.jo/ebv4.0/root\\_storage/ar/eb\\_list\\_page/](https://mohe.gov.jo/ebv4.0/root_storage/ar/eb_list_page/)
- [34] Buysse DJ, Reynolds CF III, Monk TH, Berman SR, Kupfer DJ. The Pittsburgh sleep quality index: A new instrument for psychiatric practice and research. *Psychiatry Res* 1989; 28(2): 193-213. [http://dx.doi.org/10.1016/0165-1781\(89\)90047-4](http://dx.doi.org/10.1016/0165-1781(89)90047-4) PMID: 2748771
- [35] Backhaus J, Junghanns K, Broocks A, Riemann D, Hohagen F. Test-retest reliability and validity of the Pittsburgh Sleep Quality Index in primary insomnia. *J Psychosom Res* 2002; 53(3): 737-40. [http://dx.doi.org/10.1016/S0022-3999\(02\)00330-6](http://dx.doi.org/10.1016/S0022-3999(02)00330-6) PMID: 12217446
- [36] Suleiman KH, Yates BC, Berger AM, Pozehl B, Meza J. Translating the Pittsburgh Sleep Quality Index Into Arabic. *West J Nurs Res* 2010; 32(2): 250-68. <http://dx.doi.org/10.1177/0193945909348230> PMID: 19915205
- [37] Lemmens JS, Valkenburg PM, Gentile DA. The Internet Gaming Disorder Scale. *Psychol Assess* 2015; 27(2): 567-82. <http://dx.doi.org/10.1037/pas0000062> PMID: 25558970
- [38] Baiumy S, Elella EA, Hewedi D, Elkholy H. Internet Gaming Disorder Scale. *Middle East Curr Psychiat* 2018; 25(1): 13-5. <http://dx.doi.org/10.1097/01.XME.0000526696.50303>
- [39] Zaman M, Babar MS, Babar M, Sabir F, Ashraf F, Tahir MJ. Prevalence of gaming addiction and its impact on sleep quality: A cross-sectional study from Pakistan. *Ann Med Surg (Lond)* 2012; 78: 103641.
- [40] Zhou R, Morita N, Ogai Y, *et al.* Meta-Analysis of Internet Gaming Disorder Prevalence: Assessing the Impacts of DSM-5 and ICD-11 Diagnostic Criteria. *Int J Environ Res Public Health* 2024; 21(6): 700. <http://dx.doi.org/10.3390/ijerph21060700> PMID: 38928946
- [41] Shouman A, Elez WA, Ibrahim IMA, Elwasify M. Internet gaming disorder and psychological well-being among university students in Egypt. *BMC Psychol* 2023; 11(1): 367. <http://dx.doi.org/10.1186/s40359-023-01418-6> PMID: 37924133
- [42] Mentzoni RA, Brunborg GS, Molde H, *et al.* Problematic video game use: Estimated prevalence and associations with mental and physical health. *Cyberpsychol Behav Soc Netw* 2011; 14(10): 591-6. <http://dx.doi.org/10.1089/cyber.2010.0260> PMID: 21342010
- [43] Witte CT, Finserås TR, Pallesen S, *et al.* Prevalence and Predictors of Video Game Addiction: A Study Based on a National Representative Sample of Gamers. *Int J Ment Health Addict* 2016; 14(5): 672-86. <http://dx.doi.org/10.1007/s11469-015-9592-8> PMID: 27688739
- [44] Oka T, Hamamura T, Miyake Y, *et al.* Prevalence and risk factors of internet gaming disorder and problematic internet use before and during the COVID-19 pandemic: A large online survey of

- Japanese adults. *J Psychiatr Res* 2021; 142: 218-25.  
<http://dx.doi.org/10.1016/j.jpsychires.2021.07.054> PMID: 34385071
- [45] Griffiths MD, Hunt N. Dependence on computer games by adolescents. *Psychol Rep* 1998; 82(2): 475-80.  
<http://dx.doi.org/10.2466/pr0.1998.82.2.475> PMID: 9621722
- [46] Salam Z, Sadiq Z, Tajamul U, Sethi MR, Irfan M. Internet Gaming Disorder In Students Of Peshawar: A Cross Sectional Survey. *J Ayub Med Coll Abbottabad JAMC* 2019; 31(4): 548-52. PMID: 31933309
- [47] Pontes HM, Macur M, Griffiths MD. Internet gaming disorder among slovenian primary schoolchildren: findings from a nationally representative sample of adolescents. *J Behav Addict* 2016; 5(2): 304-10.  
<http://dx.doi.org/10.1556/2006.5.2016.042> PMID: 27363464
- [48] Al Gammal MAFS, Elsheikh MMA, Abozahra AAE. Internet addiction and internet gaming disorder and associated insomnia among a sample of Al-azhar University students, clinical study. *Egypt J Hosp Med* 2019; 77(5): 5718-26.  
<http://dx.doi.org/10.21608/ejhm.2019.63227>
- [49] Rehbein F, Psych G, Kleimann M, Mediasci G, Mößle T. Prevalence and risk factors of video game dependency in adolescence: Results of a german nationwide survey. *Cyberpsychol Behav Soc Netw* 2010; 13(3): 269-77.  
<http://dx.doi.org/10.1089/cyber.2009.0227> PMID: 20557246
- [50] Turner NE, Paglia-Boak A, Ballon B, et al. Prevalence of problematic video gaming among ontario adolescents. *Int J Ment Health Addict* 2012; 10(6): 877-89.  
<http://dx.doi.org/10.1007/s11469-012-9382-5>
- [51] Macur M, Pontes HM. Internet gaming disorder in adolescence: Investigating profiles and associated risk factors. *BMC Public Health* 2021; 21(1): 1547.  
<http://dx.doi.org/10.1186/s12889-021-11394-4> PMID: 34384394
- [52] Rehbein F, Staudt A, Hanslmaier M, Kliem S. Video game playing in the general adult population of Germany: Can higher gaming time of males be explained by gender specific genre preferences? *Comput Human Behav* 2016; 55: 729-35.  
<http://dx.doi.org/10.1016/j.chb.2015.10.016>
- [53] Siste K, Hanafi E, Sen LT, Wahjoepramono POP, Kurniawan A, Yudistiro R. Potential correlates of internet gaming disorder among indonesian medical students: cross-sectional study. *J Med Internet Res* 2021; 23(4): e25468.  
<http://dx.doi.org/10.2196/25468> PMID: 33871379
- [54] Hoefl F, Watson CL, Kesler SR, Bettinger KE, Reiss AL. Gender differences in the mesocorticolimbic system during computer game-play. *J Psychiatr Res* 2008; 42(4): 253-8.  
<http://dx.doi.org/10.1016/j.jpsychires.2007.11.010> PMID: 18194807
- [55] Dong GH, Potenza MN. Considering gender differences in the study and treatment of internet gaming disorder. *J Psychiatr Res* 2022; 153: 25-9.  
<http://dx.doi.org/10.1016/j.jpsychires.2022.06.057> PMID: 35793576
- [56] Gentile D. Pathological video-game use among youth ages 8 to 18: A national study. *Psychol Sci* 2009; 20(5): 594-602.  
<http://dx.doi.org/10.1111/j.1467-9280.2009.02340.x> PMID: 19476590
- [57] Torres-Rodríguez A, Griffiths MD, Carbonell X, Oberst U. Internet gaming disorder in adolescence: Psychological characteristics of a clinical sample. *J Behav Addict* 2018; 7(3): 707-18.  
<http://dx.doi.org/10.1556/2006.7.2018.75> PMID: 30264606
- [58] Berhanu H, Mossie A, Tadesse S, Geleta D. Prevalence and associated factors of sleep quality among adults in jimma town, southwest ethiopia: a community-based cross-sectional study. *Sleep Disord* 2018; 2018: 1-10.  
<http://dx.doi.org/10.1155/2018/8342328> PMID: 29850261
- [59] Primavera D, Aviles Gonzalez CI, Romano F, et al. Does the response to a stressful condition in older adults with life rhythm dysregulations provide evidence of the existence of the "dysregulation of mood, energy, and social rhythms syndrome"? *Healthcare (Basel)* 2023; 12(1): 87.  
<http://dx.doi.org/10.3390/healthcare12010087> PMID: 38200993
- [60] Primavera D, Cossu G, Marchegiani S, Preti A, Nardi AE. Does the dysregulation of social rhythms syndrome (DYMERS) be considered an essential component of panic disorders? *Clin Pract Epidemiol Ment Health* 2024; 20(1): e17450179293272.  
<http://dx.doi.org/10.2174/0117450179293272240328053722> PMID: 38774791
- [61] Ko CH, Lin HC, Lin PC, Yen JY. Validity, functional impairment and complications related to Internet gaming disorder in the DSM-5 and gaming disorder in the ICD-11. *Aust N Z J Psychiatry* 2020; 54(7): 707-18.  
<http://dx.doi.org/10.1177/0004867419881499> PMID: 31631668
- [62] Grant JE, Chamberlain SR. Sleepiness and impulsivity: Findings in non-treatment seeking young adults. *J Behav Addict* 2018; 7(3): 737-42.  
<http://dx.doi.org/10.1556/2006.7.2018.71> PMID: 30203693
- [63] Altintas E, Karaca Y, Hullaert T, Tassi P. Sleep quality and video game playing: Effect of intensity of video game playing and mental health. *Psychiatry Res* 2019; 273: 487-92.  
<http://dx.doi.org/10.1016/j.psychres.2019.01.030> PMID: 30685731
- [64] Van den Bulck J. Television viewing, computer game playing, and Internet use and self-reported time to bed and time out of bed in secondary-school children. *Sleep* 2004; 27(1): 101-4.  
<http://dx.doi.org/10.1093/sleep/27.1.101> PMID: 14998244
- [65] Kharisma A, Fitriyasari R, Rahmawati D. Online games addiction and the decline in sleep quality of college student gamers in the online game communities in surabaya, indonesia. *Int J Psychosoc Rehabil* 2020; 24: 8987-93.
- [66] Wood B, Rea MS, Plitnick B, Figueiro MG. Light level and duration of exposure determine the impact of self-luminous tablets on melatonin suppression. *Appl Ergon* 2013; 44(2): 237-40.  
<http://dx.doi.org/10.1016/j.apergo.2012.07.008> PMID: 22850476
- [67] Hamre R, Smith ORF, Samdal O, Haug E. Gaming behaviors and the association with sleep duration, social jetlag, and difficulties falling asleep among norwegian adolescents. *Int J Environ Res Public Health* 2022; 19(3): 1765.  
<http://dx.doi.org/10.3390/ijerph19031765> PMID: 35162788
- [68] Chang CH, Chang YC, Yang L, Tzang RF. The comparative efficacy of treatments for children and young adults with internet addiction/internet gaming disorder: an updated meta-analysis. *Int J Environ Res Public Health* 2022; 19(5): 2612.  
<http://dx.doi.org/10.3390/ijerph19052612> PMID: 35270305
- [69] Sá RRC, Coelho S, Parmar PK, Johnstone S, Kim HS, Tavares H. A Systematic Review of Pharmacological Treatments for Internet Gaming Disorder. *Psychiatry Investig* 2023; 20(8): 696-706.  
<http://dx.doi.org/10.30773/pi.2022.0297> PMID: 37559452